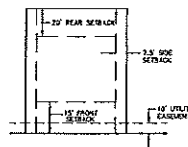
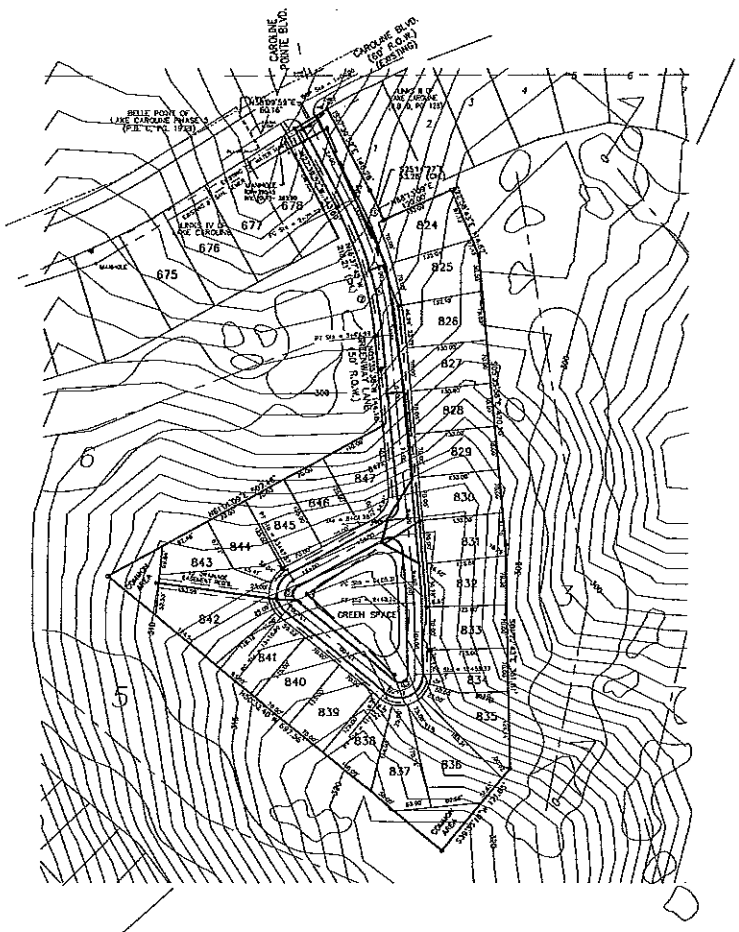
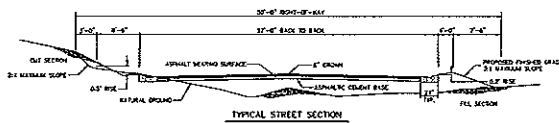


- NOTES:**
- 1/2" EXPANSION JOINT REQUIRED AT 20' INTERVALS, WITH (2) 3/4" CONCRETE BARS. 1/2" CONC REQUIRED BY ALL EXPANSION JOINTS. TIES SHALL BE MADE IN PLACE BY APPROVED CURBS OR SUPPORTS, AND 1/2" EXPANSION MATERIAL.
 - 1/4" CONTRACTION JOINT REQUIRED AT 10' INTERVALS.
 - ALL CURB & GUTTER AND DETAILS TO BE CONSTRUCTED OF 12.5' MC CONCRETE.



NOTE: 15' MINIMUM DISTANCE BETWEEN BUILDINGS.
REFERENCE COORDINATES FOR LOT SPECIFIC SETBACKS.

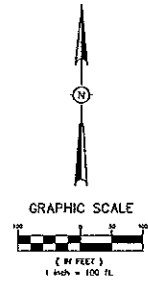
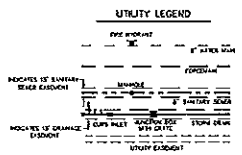


BOUNDARY CURVE DATA

① Δ = 221°27'14"	② Δ = 221°27'14"	③ Δ = 220°51'14"	④ Δ = 220°51'14"
R = 821.61'	R = 821.61'	R = 821.61'	R = 821.61'
L = 222.57'	L = 222.57'	L = 222.57'	L = 222.57'

RIGHT-OF-WAY CURVE DATA

① Δ = 221°27'14"	② Δ = 221°27'14"	③ Δ = 220°51'14"	④ Δ = 220°51'14"
R = 821.61'	R = 821.61'	R = 821.61'	R = 821.61'
L = 222.57'	L = 222.57'	L = 222.57'	L = 222.57'



- NOTES:**
1. THIS SUBDIVISION LIES WITHIN THE LIMITS ESTABLISHED FOR ZONE 70, (NO ZONING) ACCORDING TO ZONING MAP NUMBER 200000003 F, EFFECTIVE MARCH 12, 2016.
 2. DIMENSIONS ALONG CURVES ARE CHORD DISTANCES.
 3. AREA = 3.71 ACRES ± 7%, MORE OR LESS.
 4. CONCRETE MARKERS SHALL BE PLACED AT ALL CORNERS OF THE SUBDIVISION POST-CONSTRUCTION.
 5. COMMON AREAS AND EASEMENTS SHALL BE MAINTAINED BY THE HOME OWNERS ASSE BY ADJACENT LOT OWNERS, WHEREVER IS APPLICABLE AS OUTLINED IN THE COORDINATE.

DRAWING NO. 1802-15-S

H D LANG AND ASSOCIATES, INC.
POST OFFICE BOX 16085
JACKSON, MISSISSIPPI 39238
601-362-4888

PROJECT
PRELIMINARY PLAT
'LINKS FIVE OF CAROLINE'

LOCATION
SITUATED IN THE
NORTH 1/2 OF THE NORTHWEST 1/4 OF
SECTION 13, TOWNSHIP 8 NORTH - RANGE 1 EAST
MADISON COUNTY, MISSISSIPPI

DATE	REVISION	BY	DRAWN BY: D.L.M.

DATE: 5-15-18
SCALE: 1" = 100'
BOOK: **PAGE:**
PROJECT NO.: 00-199